

# Lot 156 Riverlily Circuit, Bohle Plains, Qld 4817

## House For Sale

Monday, 1 July 2024



Lot 156 Riverlily Circuit, Bohle Plains, Qld 4817

**Bedrooms: 4**

**Bathrooms: 2**

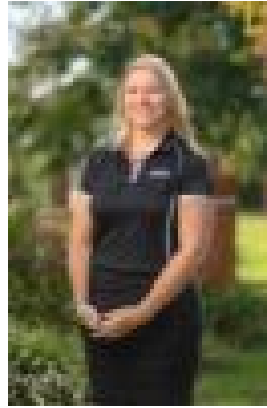
**Parkings: 2**

**Area: 406 m2**

**Type: House**



Ian Maloney  
1300455557



Sarah Wheatley  
1300455557

**\$550,500**

Luxury design offering four bedrooms with a very spacious central kitchen, dining and living area. Large custom kitchen with plenty of stone top bench space and storage. Packed with design features including study, internallaundry, and double vanities in Master ensuite and W.I.R. Secondary bedrooms can be closed off in their own wing for extra privacy. Potential to make Bedroom 4 into multipurpose/media room. Offering the highest level of standard inclusions in the local market, Ellis Developments prides itself on an unwavering commitment to customer service while also delivering the most up-to-date finishings on a truly masterful design. Our standard luxury inclusions are: \* 2700 high ceilings\* Stone benchtops to kitchen with 40mm finish to island bench\* Stone benchtops to all bathroom vanities and laundry\* Feature 3 step cornice in living/dining area\* Custom Cabinets with soft close doors and drawers\* Undermount rangehood with electric cooktop and feature airfry oven\* Fully airconditioned with split systems (all bedrooms and living, not just the master bedroom!)\* LED downlights throughout\* Security screens to all windows and sliding glass doors\* Premium Tapware and tiles up to 600mm x 600mm included\* Letterbox, 60m2 of exposed aggregate driveway and clothesline.\* Turf, irrigation and fencing included to entire block Visit our Savannah 'B' display home at 15 Firewheel Parade, Sanctum - open 9am until 5pm Fridays through to Tuesdays. Images are for illustrative purposes only.