

# Lot 179 Genovese Avenue, Ormeau, Qld 4208

## House For Sale

Saturday, 29 June 2024

Lot 179 Genovese Avenue, Ormeau, Qld 4208

**Bedrooms: 4**

**Bathrooms: 2**

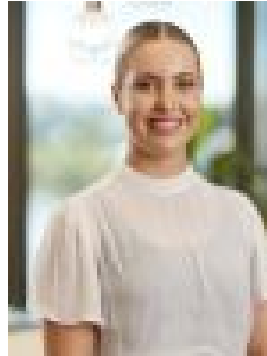
**Parkings: 2**

**Area: 375 m2**

**Type: House**



Olga Levitt



Tayla DeutscherMoore  
0497615900

**\$847,000**

Located in Ormeau, in the booming northern growth corridor between Brisbane and the Gold Coast, Amara delivers an unmatched lifestyle and location. Residents enjoy excellent access to shops and eateries, with Ormeau Village located just a short walk away. In addition, you can choose from a range of education options with; early childhood, primary and secondary schools all within easy distance. Travelling to and from Amara is a breeze with excellent access to the M1, walking distance to bus stops, and the Ormeau Train Station. A wonderfully adaptable home that has all bases covered. Perfect for maximising work-life balance, the Capri has plenty of options for creating spaces that allow you to focus on creativity and productivity or unwind and chill out in comfort. As you walk through the home, you will find a private study adjacent to the entry ideal for running a business from home or working efficiently, away from the noise and activity that's part of family life. Passing the handy, walk-through laundry with its practical storage and the beautiful central bathroom, the heart of the home opens out before you. Here, the gourmet kitchen directly links with the casual dining and living area overlooking the patio. This light-filled space also provides access to the three family bedrooms - any one of which could be easily transformed into a multi-purpose room. At the rear of the home sits the generous master suite with its walk-in robe and private ensuite. The home covers all bases, from how you and your family lives, works, plays, grows, studies and relaxes is all up to you. A fixed-price contract with everything you could want, including\* Ducted Air-conditioning\* Roller Blinds\* Fly screens\* Fully landscaped and fenced\* Solar Panels\* Premium Westinghouse appliances\* Study\* 2570mm Ceilings Ready to move in early 2025!! Enquire today to arrange an appointment to view the display. \*\* Images are indicative only