

Lot 19 Riverlily Circuit, Bohle Plains, Qld 4817

House For Sale

Monday, 1 July 2024



Lot 19 Riverlily Circuit, Bohle Plains, Qld 4817

Bedrooms: 3

Bathrooms: 2

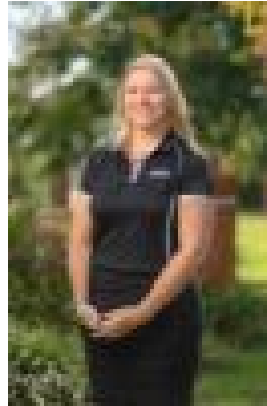
Parkings: 2

Area: 382 m2

Type: House



Ian Maloney
1300455557



Sarah Wheatley
1300455557

\$522,750

The Citadel is a 3 bedroom design with 2 living areas and is designed to encourage flow from the kitchen through the dining and living, continuing out to the outdoor area. Offering the highest level of standard inclusions in the local market, Ellis Developments prides itself on an unwavering commitment to customer service while also delivering the most up-to-date finishings on a truly masterful design. Our standard luxury inclusions are: * 2700 high ceilings* Stone benchtops to kitchen with 40mm finish to island bench* Stone benchtops to all bathroom vanities and laundry* Feature 3 step cornice in living/dining area* Custom Cabinets with soft close doors and drawers* Undermount rangehood with electric cooktop and feature airfry oven* Fully airconditioned with split systems (all bedrooms and living, not just the master bedroom!)* LED downlights throughout* Security screens to all windows and sliding glass doors* Premium Tapware and tiles up to 600mm x 600mm included* Letterbox, 60m2 of exposed aggregate driveway and clothesline.* Turf, irrigation and fencing included to entire block This highly sought after property will only be available for a short time as it caters to an ever growing market. Contact me today on 0423 960 127 to secure your dream home today! Images are for illustrative purposes only.