

Lot 22 Vantage Ave, Sunset Views Estate, Broadford, Vic 3658

House For Sale

Wednesday, 3 July 2024



Lot 22 Vantage Ave, Sunset Views Estate, Broadford, Vic 3658

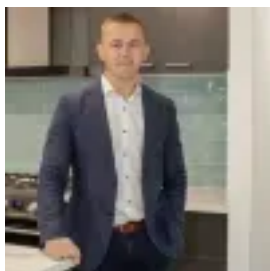
Bedrooms: 4

Bathrooms: 2

Parkings: 2

Area: 676 m2

Type: House



Ashley Thorsen

0433311100

\$634,190 House & Land

📍 Welcome to Thorsen! 📍 Your Dream Home Starts Here 📍 Discover Thorsen: Your New Home and Land Real Estate Office
📍 Located in the Heyday Arcade, Shop 5, 11-13 Sydney St, Kilmore 📍 Customizable House and Land Packages 📍 At Thorsen, we understand that your home is more than just a place to live. It's where memories are made, and dreams come to life. That's why we offer:

- Unique Floorplan Customization: Tailor your home to suit your lifestyle and needs.
- Turn-Key Options: Ready for you to move in with ease.

📍 Why Choose Thorsen? 📍 We are committed to making your new home and land journey as smooth and enjoyable as possible. Here's what we offer:

- Personalized Design and Land Selection: Work with our experts to find the perfect space and orientation for your home.
- Premium Inclusions: High gloss cabinets with soft close doors and drawers, Marble stone bench tops, 900mm appliances
- Lifetime Structural Warranty: Ensuring your home is built to last.

📍 Let Us Help You Create Your Perfect Home! 📍 From start to finish, we strive to make the process simple and stress-free. Contact us today to begin your journey towards owning the home of your dreams. 📍 Visit us at Shop 5, 11-13 Sydney St, Kilmore
Property Code: 205