

Lot 3 Tel El Kebir Terrace, Arno Bay, SA 5603

REAL ESTATE

House For Sale

Friday, 5 July 2024

Lot 3 Tel El Kebir Terrace, Arno Bay, SA 5603

Bedrooms: 1

Bathrooms: 1

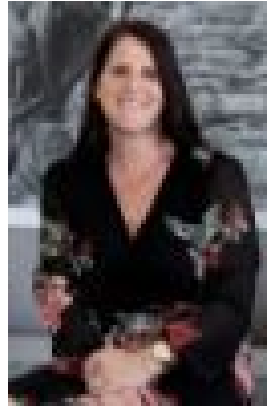
Parkings: 4

Area: 1203 m2

Type: House



Jordan Foster
0428926789



Melanie Simmonds

\$250,000

Looking for the perfect 'home away from home' location? It doesn't get better than this or the stunning coastline nearby! This residential allotment boasts a substantial 1203 square metres to play with, which allows for your imagination to run wild when it comes time to build your dream home! However, the beauty of this one is the property already boasts an amazing half shed, half living-quarters. It is very comfortable for permanent living as is. Alternatively, it would make a great basis for the shorter term while you build your new home. What we love:

- Open plan kitchen, dining and living room
- Combined laundry and bathroom with shower, vanity and toilet
- One bedroom
- Air conditioning
- Ceiling fans
- Wood fire
- Beautiful sliding barn doors that lead through to the shed area; with areas for both work and play!
- Shed with two large high clearance automatic roller doors, plus a personal access door
- Undercover patio
- Compact clothesline
- Mains power
- Mains water

Arno Bay is a thriving agriculture and aquaculture regional town on the Eyre Peninsula with some of the best fishing and camping spots around. A life of adventure awaits you! Travelling time from Arno Bay to:

- Cleve 20 min (26.4 km) drive
- Cowell 30 min (45.2 km) drive
- Port Neill 24 min (35.5 km) drive
- Tumby Bay 44 min (70.3 km) drive
- Cummins 1 hr 7 min (108.1 km) drive
- Port Lincoln Airport 1 hr 4 min (103.9 km) drive for a 50 minute flight to Adelaide
- Port Lincoln 1 hr 15 min (117.3 km) drive
- Whyalla 1 hr 34 min (150.6 km) drive
- Coffin Bay 1 hr 40 min (154.1 km) drive
- Elliston 2 hr 2 min (192.1 km) drive
- Port Augusta 2 hr 21 min (226.4 km) drive
- Streaky Bay 3 hr 5 min (300.0 km) drive
- Adelaide 5 hr 46 min (534.9 km) drive

* All distances and times are approximate only **Don't miss out on the opportunity to secure your own peace of paradise. Contact us today to arrange your inspection and in no time you'll be out in the bay catching whiting and squid for dinner!

ALLOTMENT 3 DEPOSITED PLAN 75273 IN THE AREA NAMED ARNO BAY HUNDRED OF BOOTHBY EASEMENTS LISTED ON TITLE: NIL COUNCIL: THE DISTRICT COUNCIL OF CLEVE

** Robin Hood Real Estate prides itself on its professionalism, market knowledge, and generosity to the community. Servicing all areas of Eyre Peninsula, Whyalla and Adelaide offering Sales, Property Management and Buyers Agent Services. We make a donation to the sellers chosen local charity or club for each property sold. If you are thinking of buying, selling or renting, please give us a call. We'd love to help!

**Disclaimer: Measurements and boundary outlines are approximate and are to be used as a guide only. All information provided including rates, distances, services and inclusions have been obtained from sources we believe to be accurate including but not limited to the Vendor; however, we cannot guarantee its accuracy. Anticipated rental amounts are not a sworn valuation and are an opinion only. We take no liability for any errors or omissions. Interested parties should conduct their own research to verify the accuracy of the information provided. RLA 274962