

**Lot 361 Sunnymount Circuit, Bohle Plains, Qld 4817**

**House For Sale**

Monday, 1 July 2024



Lot 361 Sunnymount Circuit, Bohle Plains, Qld 4817

**Bedrooms: 4**

**Bathrooms: 2**

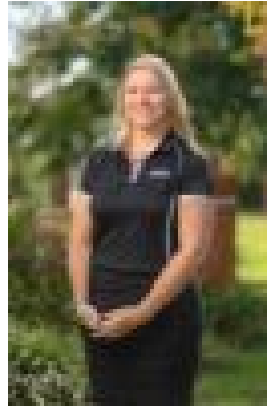
**Parkings: 2**

**Area: 920 m2**

**Type: House**



Ian Maloney  
1300455557



Sarah Wheatley  
1300455557

**\$763,450**

Perfectly designed for boat storage, this 4 bedroom features a central kitchen that overlooks dining, living, and outdoor room. A Big Island bench with breakfast bar or cocktail bar. Perfect for when friends come over. Entering through the front door, the house flows through the kitchen straight out to the outdoor room. Private bedrooms with central bathroom and laundry. Master bedroom designed at the front of the home with walk-in-robe, and deluxe ensuite. To be built by HIA and Master Builders award winners Ellis Developments, this home presents the best opportunity to get into Townsville's property market whether you are a first time buyer or seasoned investor. Offering the highest level of standard inclusions in the local market, Ellis Developments prides itself on an unwavering commitment to customer service while also delivering the most up-to-date finishings on a truly masterful design. Our standard inclusions are: • 2.7m ceilings • Stone benchtops throughout • Two types of termite protection • Split-System Air conditioning and fans in every room • 3 Step cornices in living spaces • Custom cabinetry throughout with soft close kitchen cabinets and drawers. • Designer grade tap wear throughout. Stainless steel appliances. • Tiles to all living, carpet to bedrooms. • LED down-lights to living, dining, & bedrooms. Diamond security screens to all windows and doors. • Front garden beds to meet covenant, driveway, clothesline, blinds, and letterbox. Visit our Savannah 'B' display home at 15 Firewheel Parade, Sanctum - open 9am until 5pm Fridays through to Tuesdays. Images are for illustrative purposes only.