

**ID:21132000/2316 Sandgate Road, Boondall, Qld
4034**



Townhouse For Rent

Friday, 26 April 2024

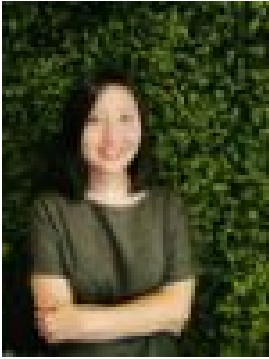
ID:21132000/2316 Sandgate Road, Boondall, Qld 4034

Bedrooms: 3

Bathrooms: 2

Parkings: 2

Type: Townhouse



Emily Chiah Min Lim
0405768798

\$630/wk with park view

Contemporary 3 Bedroom Townhouse With Large Single Garage + Undercover Carport, Located Next to Boondall Park! Rent includes lawn mowing service! Placed in a cosmopolitan position, this spacious 3 bedroom townhouse offers a sophisticated and contemporary lifestyle with convenience. Within walking distance to parks, shops, cafes, rail and bus, this home is a rare find. This home presents itself to a modern kitchen overlooking the living and dining areas in an open plan setting, the home chef will be in their element with an abundance of preparation and storage spaces, gas cooktop, and dishwasher. On the upper levels, in the large master bedroom, a good size balcony with park view offers a perfect spot to relax. On the same level, the second and third bedroom come with ceiling fans and built in robe.

First Floor:- Spacious Living and Dining area- Ducted Heating and Cooling Air Con System means air con EVERYWHERE- Separate toilet- Separate laundry room- Large Single Garage + Undercover carport + long driveway for additional small car- Open Plan Kitchen with Dishwasher, Oven and Exhaust Fan- Large Covered Outdoor Entertaining Area with Park View- Large Fenced Backyard with Side Gate

Second Floor:- Carpeted staircase and bedrooms- Large Balcony in Master bedroom with Park View- Ducted Air Con system in all bedrooms and hallway- Ceiling Fans in all bedrooms- 1 Ensuite Bathroom and 1 Shared Bathroom- Home Office/ Study Area- Walk-in Wardrobe In Master Bedroom and Built-in Wardrobes In The Other Bedrooms

Highlights:- 2 Level Design- Air con throughout with Ducted air con system- Lawn mowing service provided - Gas Stove & Hot Water- Spacious Floor Plan- NBN Installed- Stylish & Modern Design- Located next to Boondall park with dog park, kids playground and walk path.- In a quiet and peaceful complex- Easy Access to Freeways, CBD, Brisbane Airport & much more

Nearby- Bus stop at complex entrance, 3min walk to North Boondall train station- 4min to M1 Gateway Motorway- restaurants and supermarkets within 1.5km- 1km to Boondall state school, 3km to St. Joseph's Nudgee College- six childcare centres within 5km- recreation areas including Boondall Wetlands Environment Centre, Brisbane Entertainment Centre, Iceworld Olympic Ice Rink within 5km- 17km to Brisbane CBD*** Photo used may not be of exact unit available

*The information about this property has been supplied to us by the property owner, while we have no cause to doubt its accuracy, we provide no guarantee. We cannot attest to the functionality of any fixtures, fittings or inclusions to the property. Land and apartment dimensions and floor/site plans are supplied by third parties. Typing mistakes, omissions, transposing can occur, we provide to assist but make no representation. Buyers must carry out their own due diligence.

Apply For This Property Online: <https://TheOnsiteManager.com/apply/21132000>(Listing ID: 21132000)