

"Kalua", Pallamallawa, NSW 2399

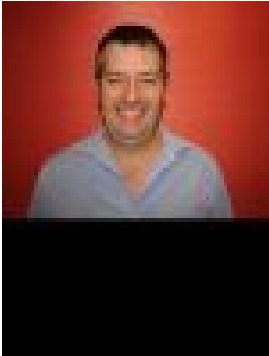


Cropping For Sale

Saturday, 11 May 2024

"Kalua", Pallamallawa, NSW 2399

Type: Cropping



Paul Kelly
0428281428



Terrence Adams
0427525666

Auction

"Kalua" - a quality farming block in the Pallamallawa area. Boasting self mulching clay soils in a tightly held area, well suited to all summer and winter crops, plus good water and improvements. The Management of Kalua has methodically built up his soil fertility program and implemented a comprehensive weed management program in conjunction with crop rotations over the last 25 years. A strategic weed plan has been in place for the last ten years to effectively manage difficult to control weeds, particularly barn yard grass and feather top Rhodes grass. Zero till practices are maintained to provide full ground cover during crop fallows. 809ha in total with 752ha currently farmed with 103ha of that being an LMC 597ha of Barley and 155ha of Faba crops included 4 bedroom homestead, 2 bathroom formal lounge and dining and open veranda, Two car garage and storage shed, 2 x 40t silos and sheep yards Bore, 22,000lt tank, Trough & 2 Dams plus double frontage to Creamin creek Located 10 Kilometres north of Pallamallawa and 42 kilometres north east of Moree Given the property location to the east of Moree has afforded very high cropping reliability over the last 25 years, with rarely a season missing out on a winter crop making this farm a solid investment