

Kiaora, Gravesend, NSW 2401

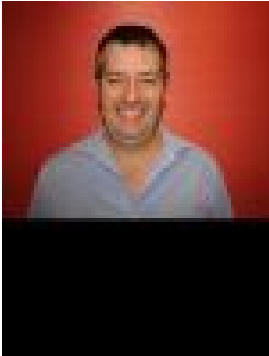


Sold Other

Friday, 19 January 2024

Kiaora, Gravesend, NSW 2401

Type: Other



Paul Kelly
0428281428



Alexander Bailey

Contact agent

AREA:824.78 hectares (2,038.076 acres)LOCATION:70km east of Moree14km north of Gravesend93km west Inverell32km west WarialdaTITLE:FreeholdCOUNTRY:Beneficial mix of soil types from heavier alluvial and chocolate river flats. The eastern end is more of a darker red/black chocolate soil type, rising up to a lighter red. Overall, an exceptional mix of soils well suited to a mixed property operation.ARABLE COUNTRY:River Flats - 270haCultivation - 380haRiver country/grazing/support - 174haCROP INCLUDED IN SALEForage Oats - 225haMaximus Barley - 168haImproved Pasture (059 Panic & Premier Dight) - 35haWATER:Water is a feature with a combination of river frontage, bore, dam and rainwater.- 8km of Gwydir River frontage- 2 x lines from the river to a tank bank- Second system - equipped with an electric submersible- Bore with submersible and tracking solar panels- 13 earth dams- Tank bank, 2 high pressure electric pumps which reticulate water to the buildings, feedlot troughs and 12 troughs- One rain water tank..FENCING:- 17 paddocks- The river is all fenced off from the cultivation- A mixture of 4 plain/2 hot wires, some newer 4 barb wires & ringlock & hot wire fences- Generally good orderIMPROVEMENTS:- 4 bedroom homestead- Grain shed- Shearing shed & skilliom- SilosEOI DETAILS:Closes, 4pm, Thursday 20th July, 2023(if not sold beforehand)CONTACT:Paul Kelly - 0428 281 428Sandy Bailey - 0406 109 492