

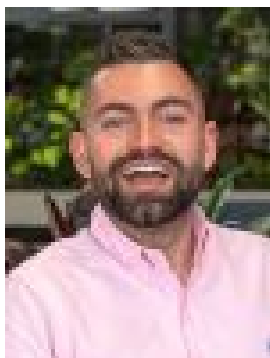
25 Blackwood Drive, Huntly, VIC, 3551

Land For Sale

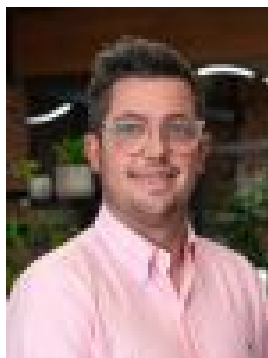
Friday, 16 August 2024

25 Blackwood Drive, Huntly, VIC, 3551

Type: Land



Sacha Dale
0407899066



Dale Bish
0457492032

Titled and ready to build in Wellsford!

Unlock the potential of a beautifully positioned 2126 sqm titled block, ready for you to build your dream home! Nestled north of Epsom in the charming suburb of Huntly, this prime piece of real estate offers a substantial building envelope, giving you ample space to craft a residence that perfectly suits your needs and desires.

Situated in a thoughtfully planned environment, Wellsford combines rural charm with modern convenience. Enjoy the benefits of generous setbacks, a discreet road network, and meticulous landscaping designed to enhance both aesthetics and privacy.

This expansive lot is ideally located close to Epsom Village, Huntly IGA, and local shops, making daily errands a breeze. Plus, with nearby schools within easy reach, it's perfect for families seeking both space and convenience.

Seize the opportunity to create your ideal lifestyle in a location that offers the best of both worlds-rural serenity and urban accessibility. Your future starts here at Lot 25 Blackwood Drive