

**3 Maitland Street, Narrabri, NSW, 2390**

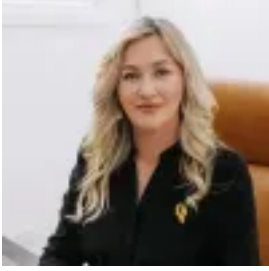


**Land For Sale**

Friday, 1 November 2024

3 Maitland Street, Narrabri, NSW, 2390

Type: Land



Kim Rozendaal

## COMMERCIAL DEVELOPMENT BLOCK WITH MAIN STREET FRONTAGE

Premium commercial block with prime main street frontage. This site offers an outstanding opportunity for business development or expansion in the Narrabri Shire. If you are after main street frontage with the ability to build exactly what your business needs it doesn't get better than this.

The property has the following:

- Prime freehold site totalling 4,047m<sup>2</sup>.
- Zoned E1 Local Centre RE1 Public Recreation.
- Water and power to the block with industrial fencing.
- Strategic positioning on Maitland Street, located 800 metres southeast of Narrabri's CBD.

Narrabri, located in the heart of northwest NSW, is a key inland logistics and resource hub with a population of approximately 13,500 across the Shire. Narrabri generates an annual economic output of \$5.67 billion, with both the agricultural and mining sectors in the region, accounting for 72% of the total economic output.

Please contact KR Property for a contract.