

3 Wheatland Drive, Truganina, Vic 3029

Residential Land For Sale

Wednesday, 29 November 2023



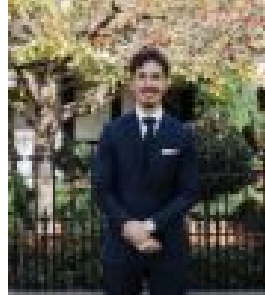
3 Wheatland Drive, Truganina, Vic 3029

Area: 548 m2

Type: Residential Land



Omer Koksal
0423230777



Jack Murray
0421522898

\$380,000 - \$418,000

*Online Auction on Thursday, 21 December from 6:00pm onwards*As one of the biggest blocks in this lovely, family oriented estate, dream big and build your own single or double storey home to suit your family (STCA). Set on over 540sqm, this corner block faces nature and a great walking track as well as being nearby to playgrounds, great new schools and local shopping. Only minutes to many local beaches, major arterial roads and an express run to the CBD. Great size block, this brick home offers three bedroom Great sized rooms and separate lounge connecting to the kitchen and flowing into the meals area. The ample backyard allows for home expansion (STCA) or a brand new build or your ideal home. Ready to move in, it's perfect for the first home buyer or builder.Highlights;- Plans already drawn up, for a copy please contact the agent - Approximately 548sqm corner block- Ready to build, subject to Council approval- Nearby to Truganina North Park, playgrounds, reserves and pony club- Located 8mins from Tarneit Station and Tarneit Central Shopping Centre 20mins to Altona and nearby beaches- Within the school catchment zones for Truganina North Primary School, Bemim Secondary College Junior Campus and Tarneit Senior College- Direct access 25kms to Melbourne CBD via M1 and 28kms to Tullamarine AirportAll information about this property has been provided to Ray White by third parties. Ray White has not verified the information and does not warrant its accuracy or completeness. Parties should make and rely on their own enquiries in relation to this property.