

36 Dale View Lane, Mapleton, Qld 4560

Sold Residential Land

Friday, 29 September 2023



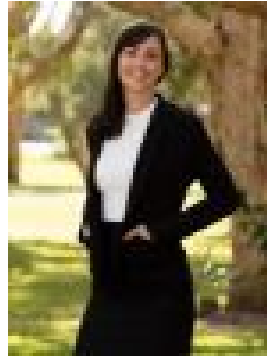
36 Dale View Lane, Mapleton, Qld 4560

Area: 1 m2

Type: Residential Land



Matt OGrady
0414317375



Alisha Galea
0753546000

\$500,000

Welcome to 36 Dale View Lane, a prime parcel of land in the Sunshine Coast Hinterland. It doesn't come much more sought after than this; just under 2.5 acres ready for you to build your dream home. Situated down the end of a quiet cul-de-sac, surrounded by nature and accompanied with uninterrupted views, this property is a must see. With a perfectly positioned area on the block for a house, you have the best of both worlds, farm land views on one side with ocean views on the other. Double level living is the most likely option to grasp the opportunity of what this beautiful block has to offer; a pole home or double level terraced home is perfect for this block. It does not get better than this. Features you'll love: • Blank canvas ready for your dream home • Superb hinterland & ocean views • Private & tranquil • 4 minutes to the main town of Mapleton • 7 minutes to the well known & beautiful Kondillila Falls • 34 minutes to the Sunshine Plaza in Maroochydore • 38 minutes to the well renowned beaches of the Sunshine Coast The new owners will be able to enjoy the early, crisp, foggy mornings and also the beautiful orange sunsets whilst all being in a convenient location to everything the Sunshine Coast has to offer. Do not miss out on the opportunity to start your new life on the Sunshine Coast and build your forever, dream home. Contact Alisha Galea on 0400 298 611 or Matt O'Grady on 0414 317 375 to book your inspection today.