

**36 Lomandra Drive, Teesdale, VIC, 3328**

**Land For Sale**

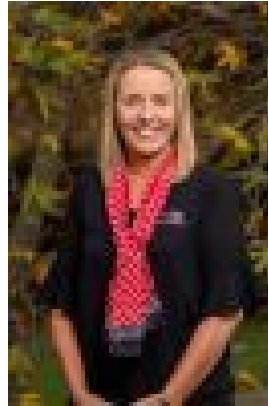
Monday, 19 August 2024

36 Lomandra Drive, Teesdale, VIC, 3328

Type: Land



Dean Wilson



Julie Kaye

0411059001

## **Lot 36 , Lomandra Estate, Teesdale - 4890m2**

### **CORNER BLOCK**

This exciting land release is For Sale now in the growing township of Teesdale!

- Stage 1: 14 blocks - TITLED LAND!
- Block sizes range from 4003m2 to 6011m2
- Rural fencing to 3 sides
- Power, water, phone available
- NBN Fixed Wireless

Teesdale is home to some wonderful amenities such as:

- Turtle Bend (annual live@turtlebend)
- Kinder & Primary School
- Community Hall
- General Store
- Medical Centre & Pharmacy
- Cricket Club
- Woolbrook Homestead