

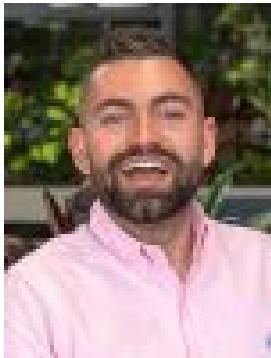
45 Blackwood Drive, Huntly, VIC, 3551

Land For Sale

Wednesday, 14 August 2024

45 Blackwood Drive, Huntly, VIC, 3551

Type: Land



Sacha Dale
0407899066



Dale Bish
0457492032

Life In Wide Open Spaces - 2,065sqm + lot

Welcome to Lot 45 Blackwood Drive, nestled in the prestigious Wellsford Estate-a standout opportunity for those seeking the perfect blend of rural tranquility and urban convenience.

This generous 2065 sqm block is titled and ready for you to build your dream home. With meticulous planning and thoughtful design at the heart of Wellsford, this allotment is part of a thoughtfully curated community featuring sprawling 2,000+ square meter blocks, generous setbacks, and a discreet road network. Emphasizing privacy and a natural setting, Wellsford Estate offers harmonious vegetation and fencing, ensuring a serene and picturesque environment.

Located just north of Epsom, Wellsford Estate places you within moments of everything you need. Enjoy the vibrant arts and culture scene of Bendigo, known for its world-class architecture, lush parks, bustling cafes, and gourmet restaurants.

Perfectly positioned between Huntly and Epsom, Wellsford provides the best of both worlds-exclusive rural charm with easy access to city conveniences. With a train station, shopping plaza, supermarkets, sporting precincts, childcare, and schools all within 3km, everything is within reach. Plus, the Bendigo CBD is just a 15-minute drive away, making it effortless to enjoy the city's offerings while retreating to your peaceful haven.

Wellsford Estate is more than just a location; it's an exclusive lifestyle community designed for those who value space, comfort, and convenience.

Don't miss out on this exceptional opportunity. Contact Bendigo's number-one selling team today to secure your future at Lot 45 Blackwood Drive, Huntly.