

560 Archerfield Road, Inala, QLD, 4077

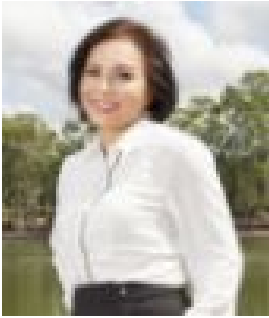


Land For Sale

Tuesday, 3 September 2024

560 Archerfield Road, Inala, QLD, 4077

Type: Land



Amy Dinh

0413845122

Seize the Opportunity to Own a Rare 1104m² Block in Prime Inala Location

Discover an extraordinary chance to own an expansive 1104m² block of land perfectly positioned on the corner of Archerfield Road and Poinsettia Street, right in the heart of Inala. In a suburb known for its strong community spirit and vibrant culture, where vacant land is almost impossible to come by, this is a rare, first-time-to-market opportunity.

This substantial corner lot sits at the intersection of two of Inala's most sought-after streets, known for their prime location and appeal. Opportunities like this are exceptionally rare, making this property a true gem.

Key Features:

Land Size: 1104m²

Premium Location: Ideally situated on the corner of Archerfield Road and Poinsettia Street, this block offers a highly coveted position in one of Inala's most desirable residential pockets.

Conveniently located close to Richlands Lions Sporting Club, restaurants, entertainments, various shops, Richlands Train Station, and local schools, this is an unbeatable location.

Quick access to the Ipswich, Centenary, and Logan Motorways ensures easy commutes to Brisbane CBD, Ipswich, or the Gold Coast.

Endless Potential: With a generous block size, you have the flexibility to build a stunning family home, a modern duplex, or an architecturally designed masterpiece (subject to council approval plus utility connection).

The corner location provides multiple design options to maximize natural light, privacy, and street presence.

Close to Amenities: Enjoy the convenience of being near the Inala Civic Centre with its fresh food markets, Richlands Shopping Centre for all your grocery needs, and multiple schools and day-care options just minutes away.

Outstanding Street Appeal: Frontage on two of Inala's most desirable streets ensures any approved development will stand out, offering excellent curb appeal in a well-established neighbourhood.

In a suburb where land of this calibre is nearly impossible to find, this property presents a once-in-a-lifetime opportunity.

Don't miss your chance to secure a piece of Inala's history and shape its future with endless possibilities at your fingertips.

AUCTION DETAILS: Saturday 21st September 2024@4.30pm on site.

For more information, contact Leisa Le 0402 732 437 or Amy Dinh 0413 845 122

"This property is advertised for Auction; therefore, a price guide cannot be provided. The website may have placed the property into a price bracket for functionality purposes, and no assumptions should be made about the sale price of this property."

Disclaimer:

In preparing this information we have used our best endeavours to ensure the information contained herein is true and accurate, but we accept no responsibility and disclaim all liability in respect to any errors, omissions, inaccuracies, or misstatements that may occur. Prospective purchasers should make their own inquiries to verify the information contained herein.