

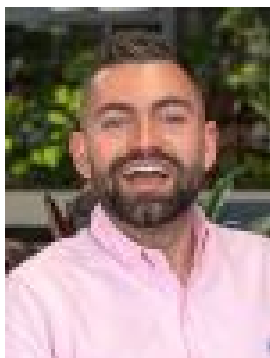
**63 Wellsford Road, Longlea, VIC, 3551**

**Sold Land**

Tuesday, 8 October 2024

63 Wellsford Road, Longlea, VIC, 3551

Type: Land



Sacha Dale

0354440344

## **Life In Wide Open Spaces (2,000sqm + lot)**

Welcome to Wellsford. Such an exciting opportunity to secure one of these huge blocks in this stunning estate, all at over 2,000 square metres.

Much care and thought has been put into how Wellsford will be brought to life. Sprawling 2,000 square metre + allotments, generous setbacks, a discrete road network, and thoughtful planning for vegetation and fencing. Located north of Epsom, just a moment from everything you need. Located in the arts and culture heart of Victoria, Bendigo boasts world-class architecture, parks, cafes restaurants, and much more. Surrounded by lifestyle properties, Wellsford itself is located between Huntly & Epsom. This exclusive rural setting provides access to city convenience, with a train station, shopping plaza, supermarkets, sporting precincts, childcare, schools, and Huntly's town centre all within 3km. With just a 15 minute drive into the Bendigo CBD, Wellsford is perfectly positioned for all your recreation, transport, shopping, and education needs.

Wellsford is an exclusive, lifestyle community. With a limited number of blocks, don't miss out. Contact Bendigo's number one selling team.