

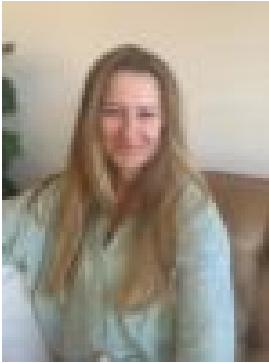
8 Wheeler Avenue, Tathra, NSW, 2550

Land For Sale

Saturday, 14 September 2024

8 Wheeler Avenue, Tathra, NSW, 2550

Type: Land



Natalie Scott
0264944500

RARE COASTAL GEM: 3 ACRES OF ELEVATED OCEAN, HEADLAND & RIVER VIEWS

Discover the perfect coastal escape with this rare 2.9 acre block, boasting elevated, panoramic views across serene natural bushland, wetlands, Bega River and ocean beyond you will never tire of the pristine environment you are surrounded in. Nestled in a charming, landlocked coastal town, this north-east facing parcel of land offers an unbeatable blend of tranquility and natural beauty. Enjoy breathtaking sunrises and watching the waves crashing on the headland, this is the ideal setting to build your dream home or investment project. This peaceful haven is a true hidden gem, offering privacy while still being close to the heart of town. Don't miss your chance to secure this unique slice of coastal paradise!

- Town water and power
- Stunning ocean & headland views & Mogareeka Inlet
- Sealed road frontage and ready to build on
- Walking & bike tracks literally at your front door
- Mostly cleared block with the ideal North East aspect
- Easy street access for the build
- Positioned to capture great natural sunlight from all aspects
- Picturesque rural setting right on the coast, surrounded by quality, newly built homes
- Come and live the lifestyle which exudes a great sense of well being
- Beautiful coastal offering within easy reach of Tathra schools, shops, cafes and beaches
- Benefits of Bega and Merimbula also only 20 minutes away
- Birds and wildlife aplenty
- Secluded, breathtaking beaches, lagoons and National Parks very close by