

Lot 006, 4 Havana Way, Nords Wharf, NSW 2281

Residential Land For Sale

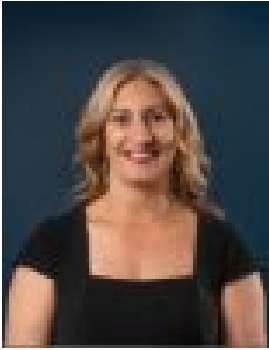
Tuesday, 7 May 2024



Lot 006, 4 Havana Way, Nords Wharf, NSW 2281

Area: 539 m2

Type: Residential Land



Victoria De Marchi
0402818080



Annabel Nist
0473364466

\$780,000

Sylvia Waters, Nord's Wharf is positioned in an idyllic lakeside address in one of Lake Macquarie's most sought-after lifestyle suburbs. Carefully planned by a team of leading consultants, Sylvia Waters incorporates 100 residential land lots, providing the perfect blank canvas to start planning your dream home. Last release of coastal living lots available! Contact one of our sales consultants today to secure a block now. - Registered & ready to build - Enjoy water views from elevated contours- No rear neighbours - potential views from north or south aspects- Some slope - perfect for split or tri-level design Located on the fringe of Wallarah National Park, Sylvia Waters offers easy access to lush bushland, threaded with leisurely walking paths, more challenging hiking trails & mountain bike riding trails. Home to a variety of wildlife and local history, the local bushland holds wonders such as Spoon Rocks, with the remains of the old break wall, private beaches, and Quarries Head, the perfect lookout for whale and dolphin spotting.