

Lot 026, 7 Allora Circuit, Nords Wharf, NSW 2281

Residential Land For Sale

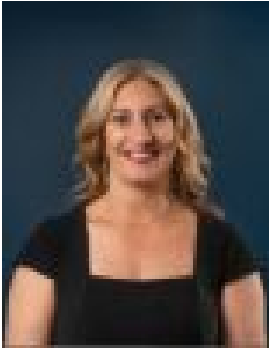
Tuesday, 7 May 2024



Lot 026, 7 Allora Circuit, Nords Wharf, NSW 2281

Area: 607 m2

Type: Residential Land



Victoria De Marchi
0402818080



Annabel Nist
0473364466

\$720,000

Sylvia Waters, Nord's Wharf is positioned in an idyllic lakeside address in one of Lake Macquarie's most sought-after lifestyle suburbs. Carefully planned by a team of leading consultants, Sylvia Waters incorporates 100 residential land lots, providing the perfect blank canvas to start planning your dream home. Last release of coastal living lots available! Contact one of our sales consultants today to secure a block now. - Registered & ready to build - 607 sq,m block – rare by today's average size! - Beautiful bush & water outlook, no opposite neighbours- Some slope – perfect for split or tri-level design Sylvia Waters captures some of Lake Macquarie's most inspired views. The vistas capture the panorama of the largest saltwater lake in the Southern Hemisphere, the lush parklands of Gwandalan, and the glittering waters at sunset. Lake Macquarie is an aquatic playground at more than twice the size of Sydney Harbour. Explore by boat, jet ski, kayak or stand-up paddle board. Swim or fish from the estate reserve or enjoy a picnic at sunset.