

# Lot 1, 79 Murray Farm Road, Beecroft, NSW 2119

## Residential Land For Sale

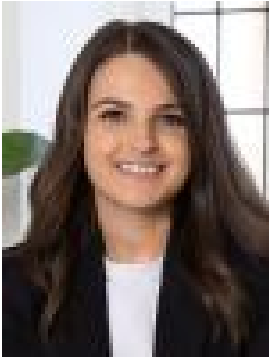
Thursday, 4 April 2024

STONE

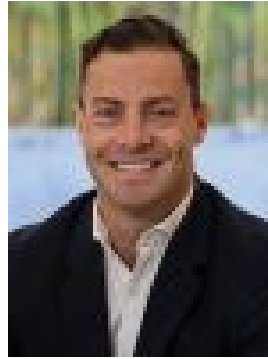
Lot 1, 79 Murray Farm Road, Beecroft, NSW 2119

Area: 674 m2

Type: Residential Land



Chloe Mawass  
0288661500



James Ramsay  
0288661500

## **Auction Guide \$1,500,000**

A rare opportunity to secure an exceptional block in Beecroft's newest land release. Build your dream home in a highly coveted position. Your choice of two blocks, both level with no easements and 29m frontage/width. • Peacefully surrounded by high quality established properties • Generous building envelopes to build your dream home (STCA) • Sought after local school catchments, Cheltenham Girls, Carlingford High and Roselea Public • Accessible to an array of Private schooling; Kings, Tara and Arden. • 20m from buses traveling to Beecroft station • 600m to Bingara Road Reserve, and 900m to Hazlewood Rose Park • 1.1km to North Carlingford Village and 1.8km to Beecroft Village and Station • Easy access to arterial roads, M2, M7 and the NorthConnex