

# Lot 1004, 23 Barbarossa Road, Edmondson Park, NSW 2174



## Sold Residential Land

Thursday, 21 December 2023

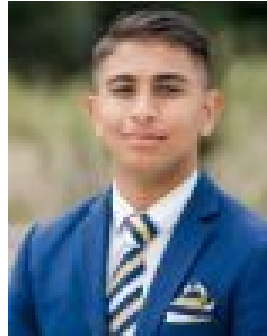
Lot 1004, 23 Barbarossa Road, Edmondson Park, NSW 2174

Area: 487 m2

Type: Residential Land



Murari Lamsal  
0433755012



Suprem Lamsal

**\$950,000**

23 B Discover an incredible opportunity to build your dream home on this magnificent 487.9sqm parcel of land in the highly sought-after neighbourhood of Edmondson Park. With a generous 16.26m frontage, this spacious land provides the perfect canvas for creating your ideal living space. Boasting a fantastic location with easy access to various amenities, this land offers the ultimate combination of convenience and comfort. Key Features: [📍 Land size: 487.9sqm](#) [📏 Frontage: 16.26m](#) Location Highlights: [🎓 Educational Facilities:](#) Situated within walking distance of esteemed educational institutions, this land offers a fantastic advantage for families with children. Enjoy the convenience of having top-notch schools nearby. [🛍️ Shopping Facilities:](#) Experience the luxury of having shopping facilities just a short stroll away. Indulge in retail therapy at nearby malls, boutiques, and supermarkets, catering to all your shopping needs. [🚗 Public Transport:](#) Commuting will be a breeze with excellent public transport options in close proximity. Enjoy the convenience of easy access to bus stops and train stations, ensuring seamless connectivity to the rest of the city. Contact us today to arrange an inspection or for further information. Hurry, as opportunities like this don't come around often!