

Lot 110, 2 The Crescent, Blair Athol, SA 5084

Residential Land For Sale

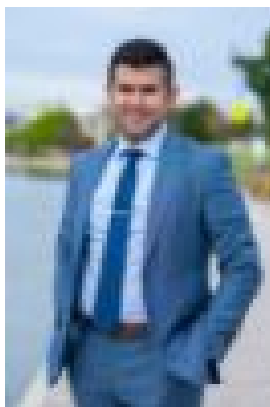
Thursday, 25 April 2024



Lot 110, 2 The Crescent, Blair Athol, SA 5084

Area: 300 m2

Type: Residential Land



San Arora

\$440000 - \$480000

" Lot 110, 2 The Crescent, Blair Athol SA 5084 "is a land parcel of 300m² located in Blair Athol, South Australia, offers a unique opportunity for development or preservation, with a rich history and potential for growth plus close to the public transport, shops, markets and other amenities too. The land is situated in a residential area and is surrounded by roads such as West Lakes Boulevard, Frederick Road, Brebner Drive, and Turner Drive. Also, it is included in the Development Proposal Area (DPA) of Blair Athol. PLACES OF INTEREST NEARBY THE LAND- Blair Castle, Blair Athol Distillery, River Garry, Blair Athol Village. SCHOOLS- Blair Athol Primary School, Kilburn Primary School, Enfield Primary School. HOSPITALS- Lyell McEwin Hospital, Modbury Hospital, Women's and Children's Hospital. For more information about this property contact San Arora on 0450 008 065. RLA 293936*All figures are quoted it is an approximation only. You must make your own inquiries as to this figure's accuracy. Onyx Realtors (Onyx Realtors Pty Ltd) does not guarantee the accuracy of these measurements. All development inquiries and site requirements should be directed to the local govt. authority.