

Lot 1150 Terminal Street, Brabham, WA 6055



House For Sale

Tuesday, 7 May 2024

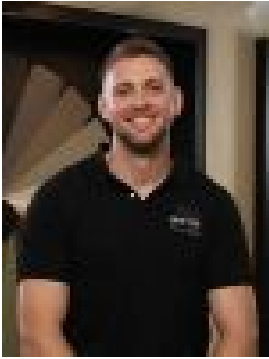
Lot 1150 Terminal Street, Brabham, WA 6055

Bedrooms: 4

Bathrooms: 2

Parkings: 2

Type: House



Ryan Sumich
0478611640

\$629,885

📍 Welcome to Lot 1150 Terminal Street, Brabham WA! 📍 Accessibility and Transport Whiteman Park Train Station is set to open in 2024, offering METRONET services that will put Perth CBD less than a 30-minute train ride away. The home is in close proximity to Parks and Conservation Wetlands, complete with BBQ facilities, grassed areas, a playground and more. Whiteman Park is also just moments away. Retail and Dining Brabham Shopping Centre is 800m away, featuring a Coles supermarket, 15 specialty stores and a collection of essential services. Located also just a short drive from Ellenbrook Town Centre. The many wineries, restaurants and cafes of the Swan Valley are within an easy drive of the home. Schools and Education Brabham Primary School can be found within walking distance and a future primary school, and choice of multiple secondary schools and childcare facilities can be found nearby. Experience the best of suburban living at Lot 1150 Terminal Street, Brabham WA. Your dream home awaits! 📍**All Images and plans depicted are for illustrative purposes only and are subject to change. This work or any part of it may not be reproduced or copied in any form without the prior written consent of Home Group. © Home Group Pty Ltd BRN 101180 *All Prices and specifications shown are subject to change without notice and are subject to final confirmation upon the terms of any agreement with Home Group at the time of purchase. *All Land is subject to availability and prices shown are subject to change without notice and are subject to final confirmation upon the terms of any agreement with the Developer & Home Group at the time of purchase. For full terms and conditions applicable please see www.homegroup.com.au/terms-conditions