

# Lot 1313, Accolade Estate, Rockbank, Vic 3335

## Residential Land For Sale

Wednesday, 15 May 2024



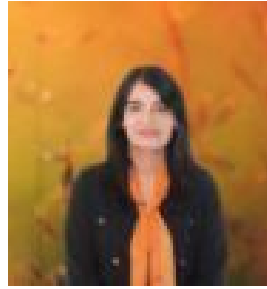
Lot 1313, Accolade Estate, Rockbank, Vic 3335

Area: 120 m2

Type: Residential Land



Harpreet Mangat  
0416412414



Babli Kundu  
0452235683

**\$399000**

Build your dream home with Soho Living in the highly sought-after Accolade Estate. This beautiful home provides you with spacious backyard, perfect for first home buyers for savvy investors! This home is a turnkey package with the following inclusions: - Architectural Façade - Fixed site costs & fixed rock removal - 2590mm high ceilings - European kitchen appliances (including dishwasher) - 20mm stone benchtops to kitchen, ensuite & bathroom - Premium mirror splashback to kitchen - Timber laminate flooring to living areas - Quality carpet to bedrooms - Landscaping to front and rear - Fencing - Letterbox - Clothesline - Coloured concrete driveway

Build your dream home with Soho Living in the highly sought-after Accolade Estate. This beautiful home provides you with spacious backyard, perfect for first home buyers for savvy investors! This home is a turnkey package with the following inclusions: - Architectural Façade - Fixed site costs & fixed rock removal - 2590mm high ceilings - European kitchen appliances (including dishwasher) - 20mm stone benchtops to kitchen, ensuite & bathroom - Premium mirror splashback to kitchen - Timber laminate flooring to living areas - Quality carpet to bedrooms - Landscaping to front and rear - Fencing - Letterbox - Clothesline - Coloured concrete driveway

Build your dream home with Soho Living in the highly sought-after Accolade Estate. This beautiful home provides you with spacious backyard, perfect for first home buyers for savvy investors! This home is a turnkey package with the following inclusions: - Architectural Façade - Fixed site costs & fixed rock removal - 2590mm high ceilings - European kitchen appliances (including dishwasher) - 20mm stone benchtops to kitchen, ensuite & bathroom - Premium mirror splashback to kitchen - Timber laminate flooring to living areas - Quality carpet to bedrooms - Landscaping to front and rear - Fencing - Letterbox - Clothesline - Coloured concrete driveway - Plus more!!

\* Harpreet Mangat on 0416 412 414 for all enquiries or to organize your next inspection! Any inspection requires a legitimate picture ID. **DISCLAIMER:** All stated dimensions are approximate only. Particulars given are for general information only and do not constitute any representation on the part of the vendor or agent. Nature strip landscaping for illustrative only.