

Lot 149 Merivale Street, Eden Park, Jensen, Qld 4818



Acresage For Sale

Sunday, 5 May 2024

Lot 149 Merivale Street, Eden Park, Jensen, Qld 4818

Bedrooms: 4

Bathrooms: 2

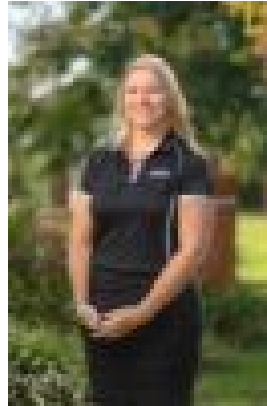
Parkings: 2

Area: 2218 m2

Type: Acresage



Ian Maloney
1300455557



Sarah Wheatley
1300455557

\$758,380 With First Home Buyers Grant

Introducing the Montgomery Design – a masterpiece tailored for acreage living, where wide frontage and a grand porch create an idyllic entrance to your spacious haven. This flexible 4-bedroom residence is a testament to modern design, featuring three well-zoned living areas that adapt to your family's evolving needs. Embrace the luxury of space as each room seamlessly flows into the next, providing a harmonious balance between comfort and versatility. Escape to the large and private master suite, strategically positioned away from secondary bedrooms. Revel in the opulence of a spacious ensuite and a walk-in robe, offering a retreat that exudes tranquility and elegance. Discover the perfect blend of functionality and sophistication in the Montgomery Design – a home where every detail is carefully curated for the unique demands of acreage living. Make this your sanctuary and embrace a lifestyle where space meets style. Eden Park blocks are selling quickly with not many blocks remaining in this estate. This block is in the last stage of this Estate. To be built by HIA and Master Builders award winners Ellis Developments, this home presents the best opportunity to get into Townsville's property market whether you are a first time buyer or seasoned investor. Our Wilmington design caters to small and large families looking for luxury living at affordable prices! Offering the highest level of standard inclusions in the local market, Ellis Developments prides itself on an unwavering commitment to customer service while also delivering the most up-to-date finishings on a truly masterful design. Our standard inclusions are:

- Large lot living featuring wide frontage and large front porch for ultimate street appeal.
- Versatile 4 bedroom design
- Large and private master suite is situated away from secondary bedrooms- equipped with large ensuite and walk-in-robe.
- Open plan living design with private rear patio situated to make the most of your large lot.
- 2.7m ceilings
- Stone benchtops throughout
- Two types of termite protection
- Split-System Air conditioning and fans in every room
- 3 Step cornices in living spaces
- Custom cabinetry throughout with soft close kitchen cabinets and drawers.
- Designer grade tap wear throughout. Stainless steel appliances.
- Tiles to all living, carpet to bedrooms.
- LED down-lights to living, dining, & bedrooms. Diamond security screens to all windows and doors.
- Front garden beds to meet covenant, driveway, clothesline, blinds, and letterbox.

Visit our Savannah 'B' display home at 15 Firewheel Parade, Sanctum - open 9am until 5pm Fridays through to Tuesdays. Images are for illustrative purposes only.