

**Lot 1502, Havant Way, Wellard, WA 6170**



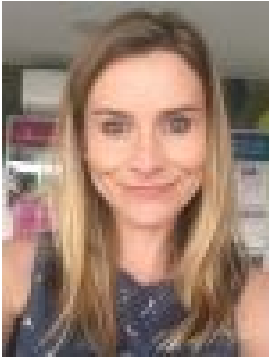
**Sold Residential Land**

Wednesday, 25 October 2023

Lot 1502, Havant Way, Wellard, WA 6170

Area: 450 m2

Type: Residential Land



Jolie McLaren  
0430406679

## Contact agent

Enjoy a connected life at The Village at Wellard. Escape to Peet's The Village at Wellard, a masterplanned community where all of life's essentials are on your doorstep. Located in Perth's southern suburbs, discover the everyday convenience of Wellard Square, Wellard Train Station, and the leafy tranquillity of our numerous landscaped parks and playgrounds complete with walking trails and picnic spots. When you choose to call our latest land release home, you will be perfectly positioned within walking distance from the brand-new Village at Wellard Primary School, as well as moments from all of life's essentials. Established in 2003, The Village is now home to over 2,500 families and growing everyday. For more information or to enquire about this connected lifestyle, please contact our friendly Sales Representative, Jolie McLaren.