

# Lot 1542, Minjary Loop, Baldivis, WA 6171

## Sold Residential Land

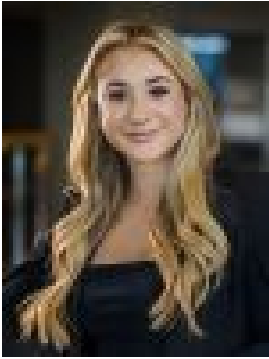
Wednesday, 28 February 2024



Lot 1542, Minjary Loop, Baldivis, WA 6171

Area: 418 m2

Type: Residential Land



Karliah Bryer

**\$223,000**

Lot 1542 is a front loaded 418sqm block with a 12.5m frontage facing north-west onto Minjary Loop, just down the road from a future landscaped park. This lot is perfectly suited to today's modern home designs and offering a lifestyle, with all the flexibility and convenience you need. We call the lifestyle, the 'park life'. You can just call it 'home'. Stage 15 land release is ideally situated with an exciting future landscaped park with green open space at its heart. Here you are perfectly placed to enjoy all the very best of Baldivis, offering activity and adventure to all ages. The green open spaces and recreation facilities create a lively hub for relaxation, exercise, sports and social gatherings. Conveniently, our future neighbourhood shopping centre located at the entry to Baldivis Parks on Daintree Street is proposed to incorporate a supermarket, specialty shops and a much-needed childcare centre. Stay tuned for its construction progress via the Baldivis Parks Facebook page.

**Baldivis Parks Fast facts:-** Every home is within 250m of a park, with 8 different parks upon completion- Located just 11km from Rockingham- Cycleways and walking paths- Bus route running conveniently through the estate- Close to transport, including Rockingham, Warnbro and Wellard train stations.- 9.2km to the beach- Close to all levels of education- Large number of sporting clubs and facilities within and around Baldivis- Close proximity to Baldivis Town Centre, shopping centres, restaurants and cafes

Baldivis Parks offers something for everyone, whether you're a first home buyer, have a growing family or looking to downsize, enjoy an outdoor lifestyle with a real connection to a vibrant community. Whether you are starting your property journey or close to deciding; we work with the best builders and finance experts who really know Baldivis and are available if you need.

**HOUSE AND LAND PACKAGES AVAILABLE.** Contact us to enjoy park life today. Sales Centre: 39 Daintree Street (off Baldivis Road) Baldivis \*Prices and availability subject to change without notice. Purchasers should rely on their own enquiries and the Contract of Sale. Images are for illustration purposes only.