

Lot 155 Juncus Court, Hay, WA 6333

Sold Residential Land

Wednesday, 8 May 2024



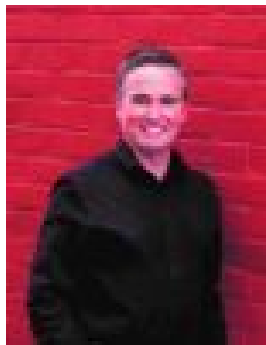
Lot 155 Juncus Court, Hay, WA 6333

Area: 3116 m2

Type: Residential Land



Darren Leslie
0414888244



Rhett Bull
0408264309

Contact agent

Springdale Beach is an intimate estate of just 170 homesites on the South Coast Highway near Denmark. It's just 2.5km east of the Denmark town centre and 30 minutes to Albany. The Denmark Golf and Country Club is in walking distance, and all homesites have easy access to the tranquil waters of Wilson Inlet, Denmark's first safe swimming beach. Living at Springdale Beach provides the opportunity to enjoy the unique environment including proximity to The Valley of the Giants and Tree Top Walk, rocky headlands, secluded beaches and sheltered bays. You can enjoy visiting one of the many local vineyards, cafes and tourist attractions or relax by fishing, surfing and bushwalking. The site was chosen by the award winning LWP Property Group as it provided a rare opportunity to develop a significant estate with beach access to the stunning Wilson Inlet, as well as hinterland views and close proximity to the town centre. For more detailed information on your new Springdale Beach homesite please contact Darren Leslie on 0414 888 244 or Rhett Bull on 0408 264 309 from Ray White Albany.