

Lot 161 Mount Kulburn Drive, Eden Park, Jensen, Qld 4818



Acresage For Sale

Sunday, 5 May 2024

Lot 161 Mount Kulburn Drive, Eden Park, Jensen, Qld 4818

Bedrooms: 5

Bathrooms: 2

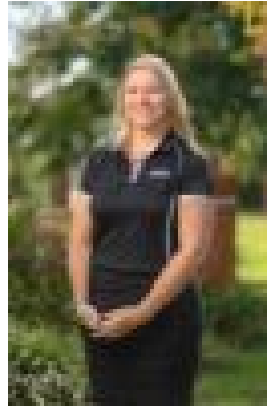
Parkings: 2

Area: 2157 m2

Type: Acresage



Ian Maloney
0423960127



Sarah Wheatley
0411690859

\$756,580 With First Home Buyers Grant

Eden Park blocks are selling quickly with not many blocks remaining in this estate. This block is in the last stage of this Estate. The Charleston is the perfect acreage design featuring wide frontage and a large front porch for that ultimate street appeal. Featuring 5 generous sized bedrooms, separate home media room, kid's rumpus area, 2 bathrooms and a double garage. Other features include a walk in Pantry, walk in Robe, double vanity unit to the ensuite and a large protected Patio. To be built by HIA and Master Builders award winners Ellis Developments, this home presents the best opportunity to get into Townsville's property market whether you are a first time buyer or seasoned investor. Offering the highest level of standard inclusions in the local market, Ellis Developments prides itself on an unwavering commitment to customer service while also delivering the most up-to-date finishings on a truly masterful design. Our standard inclusions are:

- 2.7m ceilings
- Stone benchtops throughout
- Two types of termite protection
- Split-System Air conditioning and fans in every room
- 3 Step cornices in living spaces
- Custom cabinetry throughout with soft close kitchen cabinets and drawers
- Designer grade tap wear throughout
- Stainless steel appliances
- Tiles to all living, carpet to bedrooms
- LED down-lights to living, dining, & bedrooms
- Diamond security screens to all windows and doors
- Front garden beds to meet covenant, driveway allocation, clothesline, blinds, and letterbox.

This highly sought after property will only be available for a short time as it caters to an ever growing market. Contact me today on 0423 960 127 to secure your dream home today! Images are for illustrative purposes only.