

Lot 177 Riverlily Circuit, Bohle Plains, Qld 4817

House For Sale

Thursday, 6 June 2024



Lot 177 Riverlily Circuit, Bohle Plains, Qld 4817

Bedrooms: 4

Bathrooms: 2

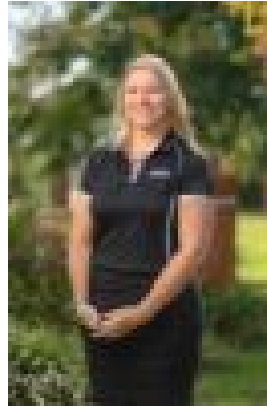
Parkings: 2

Area: 172 m2

Type: House



Ian Maloney
1300455557



Sarah Wheatley
1300455557

\$531,700

This optimized 4 bedroom design created specifically for the blocks on which they sit Large master bedroom with large ensuite and walk-in-wardrobe. Open plan living design with front patio situated to make the most of easterly breezes. Packed with features including internal laundry, study nook, and storage. To be built by HIA and Master Builders award winners Ellis Developments, this home presents the best opportunity to get into Townsville's property market whether you are a first time buyer or seasoned investor. Offering the highest level of standard inclusions in the local market, Ellis Developments prides itself on an unwavering commitment to customer service while also delivering the most up-to-date finishings on a truly masterful design. Our standard inclusions are:

- 2.7m ceilings
- Stone benchtops throughout
- Two types of termite protection
- Split-System Air conditioning and fans in every room
- 3 Step cornices in living spaces
- Custom cabinetry throughout with soft close kitchen cabinets and drawers.
- Designer grade tap wear throughout.
- Stainless steel appliances.
- Tiles to all living, carpet to bedrooms.
- LED down-lights to living, dining, & bedrooms.
- Diamond security screens to all windows and doors.
- Front garden beds to meet covenant, driveway allocation.

clothesline, blinds, and letterbox. This highly sought after property will only be available for a short time as it caters to an ever growing market. Contact me today on 0423 960 127 to secure your dream home today! Images are for illustrative purposes only.