

Lot 2, 17 Glen Avon Drive, Bannockburn, Vic 3331

Sold Residential Land

Wednesday, 31 January 2024

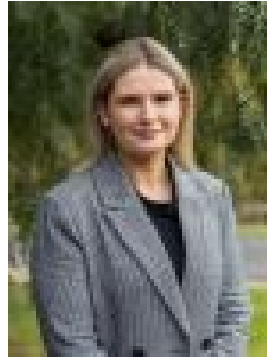
Lot 2, 17 Glen Avon Drive, Bannockburn, Vic 3331

Area: 5580 m2

Type: Residential Land



Seka Powell
0409235245



Demi Lynch
0499550114

\$600,000

This private and flat block of land is just the best - in fact it could be said to be better than all the rest! Beautifully maintained, the expansive block has a north-facing back yard position and is situated in a well established pocket of Bannockburn. A whopping 5580sqm allows for a 4-bedroom plus study or 5-bedroom home, plus there's lots of room for a large shed, play area, entertainment space, lawn and more. Power, water and NBN are all available and the block offers easy access to the Hamilton and Midland Highways, the Geelong Ring Road and all the amenities and great schools on offer in the growing township. Build your dream home right here in the loveliest locale with room to move!