

Lot 2 & 3 Bishopsbourne Road, Carrick, Tas 7291

Residential Land For Sale

Tuesday, 19 March 2024



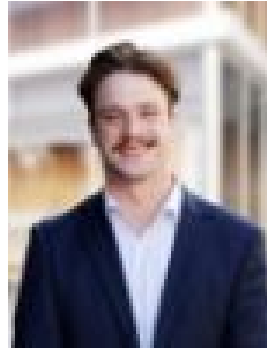
Lot 2 & 3 Bishopsbourne Road, Carrick, Tas 7291

Area: 6550 m2

Type: Residential Land



David Parry
0488123410



Brad Ball
0499559045

Offers Over \$329,000

Introducing two prime blocks of land nestled in the highly sought-after area of Carrick, offering a perfect blend of rural serenity and urban convenience. LOT 2 and LOT 3 present flat parcels of land, each boasting generous dimensions with LOT 2 spanning 6550m² and LOT 3 close behind at 6540m². Both lots come equipped with tank water access, ensuring sustainability and self-sufficiency for your future home. Located just a convenient 10-minute drive away from major shopping centers and a mere 15-minute commute to Launceston, these lots provide unparalleled accessibility to urban amenities while preserving the tranquility of rural living. Ideal location to build a home for families with school-aged children, these lots offer easy access to a range of educational options, including rural public schools and a selection of public and private schools in Launceston, all within a comfortable commuting distance. Moreover, the surrounding area caters to everyday needs with amenities such as a post office, local pub, petrol station, sports courts, bus stops, and the convenience of the nearby Hadspen IGA supermarket, ensuring that daily errands are effortlessly taken care of. Embrace the opportunity to craft your dream home or secure a promising investment in Carrick's fast-growing historic town. Enjoy breathtaking views of the Western Tiers and beyond, providing the perfect backdrop for your envisioned abode. Whether you're seeking a tranquil retreat or a strategic investment opportunity, these vacant land lots offer the perfect canvas to realize your aspirations amidst the charm and allure of Carrick's picturesque surroundings. LOT 2 - 6550m² LOT 3 - 6540m²*We have in preparing this listing used our best endeavours to ensure the information is true & accurate. Prospective purchasers are advised to carry out their own investigation.