

Lot 2003, 180-238 Exford Road, Weir Views, Vic 3338

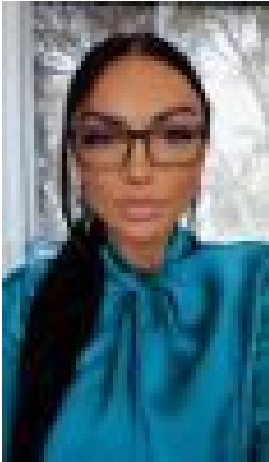
Residential Land For Sale

Tuesday, 21 May 2024

Lot 2003, 180-238 Exford Road, Weir Views, Vic 3338

Area: 312 m2

Type: Residential Land



Aida Kubat SVB
0418577055

\$342,000

Featuring 36 lots to choose from, ranging in size from 136m² to 759m², this stage includes something to suit every lifestyle. Just minutes from central Melton, Seventh Bend offers its residents urban living in a natural setting. It's where urban life meets park life. For more information, please contact the Seventh Bend Sales Team on 0418 577 055 or email hello@seventhbend.com.au.