

Lot 204 Nightfall Avenue - Verve, Clyde North, Vic 3978



House For Sale

Saturday, 20 April 2024

Lot 204 Nightfall Avenue - Verve, Clyde North, Vic 3978

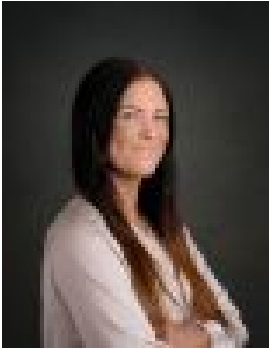
Bedrooms: 4

Bathrooms: 2

Parkings: 2

Area: 392 m2

Type: House



Abbey Cole
0397708806

\$759,200*

Titled Land Architecturally inspired with an extensive range of standard inclusions and detailing, our Merbau 25 floor plan is designed to balance stylish practicality and spacious, luxury living. Luxurious Standard Inclusions... ? Double glazed windows and sliding doors? Dulux Wash and Wear 3 Coat paint? Fisher and Paykel stainless steel appliances (900mm)? Engineered stone benchtops to Kitchen? Laminate overhead cupboards to Kitchen? Quality floor coverings throughout? Tiled shower bases? Towel rails and toilet roll holders ? Flyscreens provided to all openable windows? Built in laundry laminate unit with inset trough? Gas ducted heating ? Solar PV system? Colorbond sectional overhead door with 2No. remote controls? 7-Star energy rating compliance Note - This is NOT an established home 28-week build time guaranteed 12-month maintenance period 25-year structural guarantee WANT TO VIEW OUR HOMES? Call now to book an appointment! Homes on Display: Wave 22, Merbau 25, Norfolk 28, Portsea 28, Elwood 33, Jarrah 35 & Lorne 40. Open 11-5pm (Closed Thursday & Friday) Beachwood Homes is a locally owned and operated builder operating since 1996. All these years of experience has contributed to our company being recognised and respected for our attention to quality and detail. With over 50 standard home designs, we have a design to suit everyone! *Beachwood Homes does not own this property - house and land sold separately. Price is based off our standard design & preferred siting. Images are indicative only & may nominate additional cost items. Beachwood Homes Pty. Ltd. Reserve the right to amend pricing, inclusions and promotions without notice.