

Lot 206, 12 Gladstone Way, Cameron Park, NSW 2285

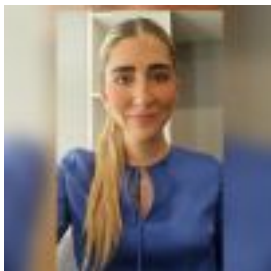
Sold Residential Land

Monday, 6 November 2023

Lot 206, 12 Gladstone Way, Cameron Park, NSW 2285

Area: 450 m2

Type: Residential Land



Cameron Grove

\$490,000

Cameron Grove Estate is a well thought out, family-orientated development located close to shops, schools, the University of Newcastle, parks and recreational facilities. Just moments from the M1 and Hunter Expressway – Cameron Grove has it all! An ideal location to raise a family, Cameron Grove Estate offers not only luxurious modern homes but access to an easy, well-connected lifestyle. Within just a ten-minute drive, residents are connected to no less than 12 schools, including Edgeworth Heights and West Wallsend High School. School-age kids also enjoy an abundance of play areas nearby, including playgrounds, outdoor gyms, nature reserves and picnic areas, sport fields and running tracks, netball courts and even a skate park. For parents, a shopping centre, cafés and Woolworths, Harrigan's Irish Pub already under construction directly within Cameron Grove Estate. Woolworths has already opened for business; situated just a 30-minute drive from Newcastle and a five-minute drive from the Hunter Expressway, plus enjoying close connections to major commuting routes within a ten minute drive. We are welcoming you 5 days a week, via appointment at 28 Breakwell Road, Cameron Park NSW 2285 you can get in contact with us 02 4955 4820.