

Lot 2106, 302 Campbelltown Road, Bardia, NSW 2565



Residential Land For Sale

Thursday, 30 May 2024

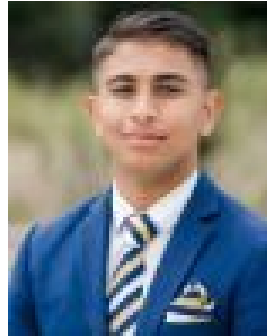
Lot 2106, 302 Campbelltown Road, Bardia, NSW 2565

Area: 234 m2

Type: Residential Land



Murari Lamsal
0433755012



Suprem Lamsal
0426577272

CONTACT AGENT

Discover an outstanding opportunity to acquire a premium plot of land situated at 302 Campbelltown Road, Bardia NSW 2565. This spacious parcel spans 234 square meters and enjoys a strategic location near essential amenities, making it an excellent option for those in search of a residential retreat. This 234-square-meter land parcel offers a blank canvas for your dream home, providing boundless opportunities for customization and layout. Whether you're a first-time homebuyer, an investor, or seeking an upgrade, this property awaits your unique vision. Don't let the chance slip away to become a part of a rapidly expanding community in this strategically positioned Bardia locale. Envision your desired lifestyle and seize the opportunity to construct your dream residence in this prime location. Take action now to secure your future in a flourishing and well-connected neighborhood. Proximities: 500 metres from Ed Square Shopping Centre 300 metres from Bardia Public School 700 metres from Edmondson Park Train Station. Reach out to us today to schedule an inspection or to obtain further details. Act swiftly, as opportunities like this are rare! Disclaimer: The information presented has been furnished from sources we deem to be reliable. We have not verified whether the information is accurate and do not accept any responsibility to any person and do no more than pass it on. All interested parties should rely on their own enquiries to determine the less.