

Lot 217, 29 Paxillus Way, Hay, WA 6333

Sold Residential Land

Monday, 23 October 2023

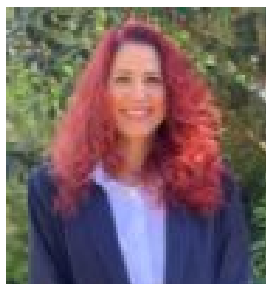
Lot 217, 29 Paxillus Way, Hay, WA 6333

Area: 2144 m2

Type: Residential Land



Dennis Davis



Leisha Davis
0431879697

\$105,000

4 blocks of Offer that give you the chance to secure over half an acre of north facing land within the Denmark Airport Estate. Located only a few kilometres east of town, this cleared land enjoys power to the boundary and wide open north aspects to help you plan where to build your Denmark dream. With flying in mind, this a great opportunity to secure an affordable parcel of land and build your next stage in life. Designed to ensure only for activities and industries associated with aircraft that need to be located adjacent to the airfield. There is a broad range of land use options (subject to Denmark Shire approval). All provisions are available on enquiry. 29 Paxillus Way is Lot 217 (2144sqm) For more information on this fantastic land and the Denmark Airfield and Airpark, please call Dennis 0428 481 940.