

# Lot 22 Buckland Drive, Rasmussen, Qld 4815

## House For Sale

Monday, 1 July 2024



Lot 22 Buckland Drive, Rasmussen, Qld 4815

**Bedrooms: 4**

**Bathrooms: 2**

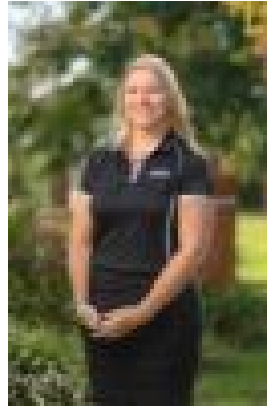
**Parkings: 2**

**Area: 612 m2**

**Type: House**



Ian Maloney  
1300455557



Sarah Wheatley  
1300455557

**\$571,750**

Welcome to the Celestial, where luxury meets practicality in this beautifully zoned 4-bedroom design. Nestled in a serene neighborhood, this home offers the perfect blend of space and comfort for your family. Master Bedroom Paradise: Indulge in your own sanctuary with a spacious master bedroom featuring a wrap-around ensuite and a private parents' retreat. Perfectly designed for relaxation and privacy, it's the ultimate escape after a long day. Kids' Wing: Give your children their own space to thrive! Discover a dedicated kids' wing complete with three bedrooms and a vibrant activities area. Ideal for playtime and study sessions, this area ensures they have room to grow and explore. Exceptional Features: This home boasts a large Butler's pantry, enhancing both style and functionality in the kitchen area. It's perfect for storing supplies and preparing meals without cluttering your main living spaces. To be built by HIA and Master Builders award winners Ellis Developments, this home presents the best opportunity to get into Townsville's property market whether you are a first time buyer or seasoned investor. Offering the highest level of standard inclusions in the local market, Ellis Developments prides itself on an unwavering commitment to customer service while also delivering the most up-to-date finishings on a truly masterful design. Our standard inclusions are: • 2.7m ceilings • Stone benchtops throughout • Two types of termite protection • Split-System Air conditioning and fans in every room • 3 Step cornices in living spaces • Custom cabinetry throughout with soft close kitchen cabinets and drawers. • Designer grade tap wear throughout. • Stainless steel appliances. • Tiles to all living, carpet to bedrooms. • LED down-lights to living, dining, & bedrooms. • Diamond security screens to all windows and doors. • Front garden beds to meet covenant, driveway allocation. clothesline, blinds, and letterbox. This highly sought after property will only be available for a short time as it caters to an ever growing market. Contact me today on 0423 960 127 to secure your dream home today! Images are for illustrative purposes only.