

Lot 22 The Gateway Estate, 556 John Oxley Drive, Thrumster, NSW 2444

Residential Land For Sale

Saturday, 4 May 2024

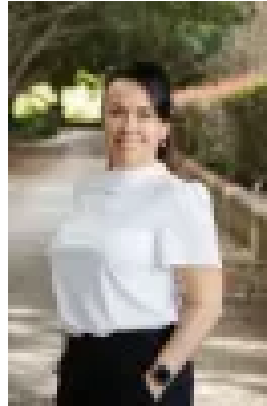
Lot 22 The Gateway Estate, 556 John Oxley Drive, Thrumster, NSW 2444

Area: 545 m2

Type: Residential Land



Paul Loughland
0402639265



Arcadia Loughland
0408301970

\$350,000 - \$385,000

Introducing Lot 22 at The Gateway, nestled within the new Gateway Estate in Thrumster. This 545 sqm parcel of land offers a generous 16.5m frontage, providing ample space for your dream home. Key Features:- Generous 545 sqm land size with 16.5m frontage- Elevated position with commanding views- North to rear aspect for optimal natural light- Water, sewer, electricity, and NBN connections available- Ideal location offering tranquility and convenience- Expected registration by End of 2nd Quarter 2024

Situated in an elevated position, this block boasts a commanding outlook and enjoys a desirable north-to-rear aspect, capturing abundant natural light throughout the day. With essential utilities such as water, sewer, electricity, and NBN connections available. Positioned in an ideal location, residents will appreciate the tranquility while still being within easy reach of essential amenities, schools, and recreational facilities. Expected registration by the end of the second quarter in 2024. Don't miss this opportunity to secure your slice of prime real estate in the heart of Thrumster's Gateway Estate. Enquire today to make Lot 22 your future home address. For further information and to discuss this vacant land lot, please contact Paul Loughland and the NPB Team. Paul Loughland: 0402 639 265 NPB Office: 0447 020 742

Located approximately:- 400m to Port Macquarie Service Centre- 500m to Sovereign Hills Town Centre and speciality shops, including a pharmacy, modern gym, IGA plus liquor and cafés- 1.2km to St Joseph's Regional College- 5.3km to Lake Innes Village Shopping Centre- 5.9km to Port Macquarie Base Hospital- 6.1km to Charles Sturt University- 7.1km to the University of NSW Rural Clinical School- 7.8km to TAFE NSW- 9.2km to Port Macquarie CBD- 11.1km to Port Macquarie Town Beach- 11.3km to Port Macquarie Airport

DISCLAIMER: The information contained in the advertising of this property is not based on any independent enquiries or knowledge of the agents, and the vendor and agents expressly disclaim any liability arising therefrom. The accuracy of the information cannot be guaranteed, and prospective purchasers should make their own enquiries and form their own judgement as to these matters.