

Lot 2231, Durocher Crescent, Newhaven, Tarneit, Vic

PEET

3029

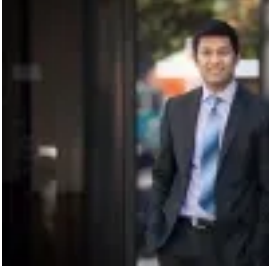
**Sold Residential Land**

Tuesday, 17 October 2023

Lot 2231, Durocher Crescent, Newhaven, Tarneit, Vic 3029

Area: 350 m2

Type: Residential Land



Mohit Kumar  
0439393829

**\$392,000**

Build the lifestyle you've always wanted with Newhaven's Sanctuary Release. The Sanctuary Release is in a sought-after corner of Newhaven, the perfect location to build a home to suit your lifestyle. Plus, with landscaped paths nearby you'll be able to enjoy an easy stroll around your beautiful new community. About Newhaven: Located along Tarneit Road, Newhaven will include over 2,000 homes with all the trimmings you would expect from a masterplanned community – tree-lined streets, parks, playgrounds, and custom landscaping, all designed specifically for you. Plus, there's also a government primary school opening in 2024, proposed 10-hectare sports grounds, the proposed Tarneit West Train Station and a proposed town centre all located within Newhaven's masterplan. Featuring all the trimmings you expect from a masterplanned community, Newhaven will include a great range of features and will be home to people just like you. More information, visit the Newhaven Sales and Information Centre at 18 Legion Avenue, Tarneit 3029. About Peet: Bringing Land to Life Since 1895 From our beginnings in the late 19th century, to award winning communities of the 21st century, we've been helping families discover the delight and security of owning their own home. Peet is now one of Australia's largest and most influential property developers, shaping the growth and development of new communities across Australia. Join us as we continue to build on almost 130 years of fine tradition.