

Lot 23 Bluegrass Circuit, Somers and Hervey, Rasmussen, Qld 4815

House For Sale

Sunday, 5 May 2024



Lot 23 Bluegrass Circuit, Somers and Hervey, Rasmussen, Qld 4815

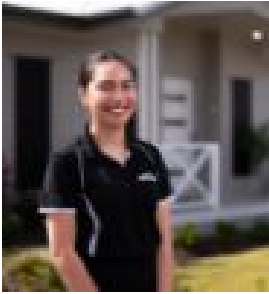
Bedrooms: 4

Bathrooms: 2

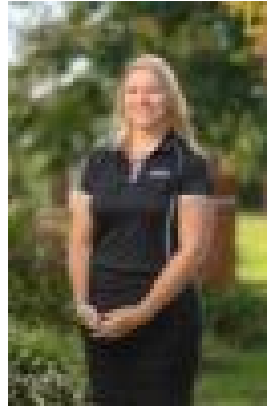
Parkings: 2

Area: 450 m2

Type: House



Shayley Connelly
1300455557



Sarah Wheatley
0411690859

\$458,970 with first home owners grant

Discover the Milverton plus Media Room, a beautifully designed 4-bedroom home offering a modern and efficient layout. The central kitchen is the heart of this home, with a large island bench and breakfast bar seamlessly connecting to open-plan living areas. The master suite, positioned away from the secondary bedrooms, provides a private retreat. It includes a spacious walk-in robe and an ensuite bathroom, designed for comfort. This house and land package is situated in the New Development Estate in Upper Ross, Sommers and Hervey! All Ellis Developments homes feature:

- 2.6m ceilings
- Laminate breakfast bar and kitchen bench tops
- Security Screens
- Roller Blinds
- Custom cabinets with soft close doors

To be built by Master Builders award winners Ellis Developments, this home presents the best opportunity to get into Townsville's property market whether you are a first time buyer or seasoned investor. Offering the highest level of standard inclusions in the local market, Ellis Developments prides itself on an unwavering commitment to customer service while also delivering the most up-to-date finishings on a truly masterful design. **Landscaping and Fencing is not included in this package price. Contact the agent for a quote.