

Lot 23, Fairfield Road, Elizabeth Grove, SA 5112



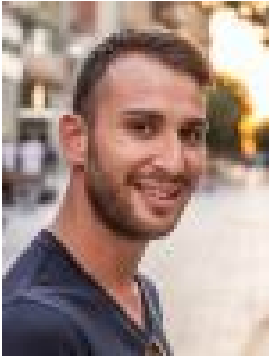
Sold Residential Land

Tuesday, 19 September 2023

Lot 23, Fairfield Road, Elizabeth Grove, SA 5112

Area: 424 m2

Type: Residential Land



Chris Raptis

Contact agent

The price is right on these magnificent two allotments, on 424 sqm (approx) and with frontages of over 9m, its more than you you'd expect. There are no registered easements or encumbrances, so this is your perfect opportunity to choose your builder and reap the rewards of your next family home on a large block and in a super location. Allotment #1: 424 sqm Frontage: 9m Depth: 45.72m Allotment #2: 424 sqm Frontage: 9m Depth: 45.72m This is land with a difference, you'll love the neighbours - Ridley Reserve & Fremont Park, just around the corner! Centrally located to the Valo training Centre and the ideal Elizabeth City Centre shopping precinct and the Leyell McEwin Hospital is just around the corner. The location is simply fantastic, with everything a short stroll away as well as easy access to public transport and the best schooling in the area. Note: This proposed plan of land division is not to scale and is for illustration purposes only. This proposed plan is to be used as a guide of approximately where things are to be located and are subject to change and all Government & Council consents, and do not rely upon this proposed plan for inclusions &/or exclusions/etc as this proposed plan/information may vary. Refer to the agent &/or the owner for further clarification. While every effort has been made to verify the correct details, neither, the vendor, illustrator or agent/etc accept liability for any error or omission. All parties are requested to take relevant action to satisfy themselves of any issues. Raptis Real Estate RLA 255026 Specifications: CT / 5257/49 Council / City of Playford Zoning / HDN Land / 424m² Each Block Frontage / 9.43m Nearby Schools / Elizabeth Grove P.S, Elizabeth Vale P.S, Elizabeth South P.S, Kaurna Plains School It is important to note this disclaimer upon you - as the potential purchaser/s to obtain independent professional advice as all information marketed, care of the property on behalf of the vendor/s has been sourced from external sources. Raptis Real Estate as authorised agents (RLA: 267938) is neither responsible for the content/s of the information, nor accepts liability to any party who might use or rely upon this information in whole or part of its contents of any errors or omissions including, but not limited to the land size, build size or dimensions, floor plans, building age and or condition or any other particulars of Interest.