

Lot 231, Parvula Place, Logan Reserve, Qld 4133

Residential Land For Sale

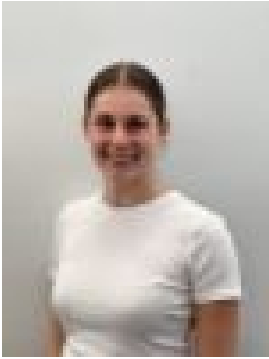
Tuesday, 14 May 2024



Lot 231, Parvula Place, Logan Reserve, Qld 4133

Area: 649 m2

Type: Residential Land



Nikayla Kiers

\$380,000

Lot 231 in this boutique Parvula Place land release features a rare 649sqm size perfect for families. Construction is complete and titles are expected to be received in late July. Lot 231 is now being brought to market for sale by Petrie Property. With 3 lots sold, only 3 remain in this one off release of large family sized blocks. This is a premium lot within a peaceful and charming established estate in Logan Reserve. Situated at the end of a cul-de-sac with views out over the Council nature reserve, this is one of the best spots in Logan Reserve! Perfectly located with easy access to shops, schools, hospitals and transport this is the perfect place to build your perfect family home. PERFECTLY LOCATED: 12 minutes to Logan City Centre 30 minutes to Brisbane CBD 35 minutes to Gold Coast. Get in touch with Petrie Property to find out more and secure this lot now to build your dream home.