

Lot 24 Smeaton Avenue, Murray Bridge, SA 5253



House For Rent

Saturday, 4 May 2024

Lot 24 Smeaton Avenue, Murray Bridge, SA 5253

Bedrooms: 4

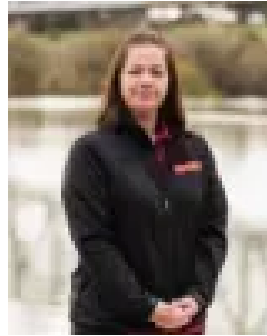
Bathrooms: 2

Parkings: 2

Type: House



Jane Mason for RLA
0885322822



Samone Langton for RLA
0885322822

\$525 Weekly

Brand new 4 bedroom home, in the newly established Newbridge Estate, situated close to the Murray Bridge Golf Course and a stones throw to all the amenities and services of Murray Bridge. Main bedroom has a walk in robe and ensuite, all other bedrooms have built in robes, kitchen with butlers pantry and open plan living and meals area leading out onto an alfresco area. Three way bathroom, double garage with roller door with personal access directly into the home, reverse cycle air conditioner, fenced yards and landscaping. Please Note - All information provided has been obtained from sources we believe to be accurate, however, we cannot guarantee the information is accurate and we accept no liability for any errors or omissions. Interested parties should make their own enquiries and obtain their own legal advice. A rental application is required to be completed before a viewing may be arranged. Applications are available on our Website www.masonsrealestate.com.au under the "For Rent" tab.