

# Lot 258, 40 Fig Crescent, Cameron Park, NSW 2285

RIBA  
REAL ESTATE

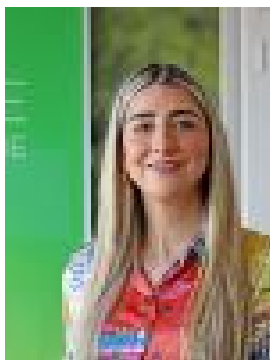
## Residential Land For Sale

Wednesday, 8 May 2024

Lot 258, 40 Fig Crescent, Cameron Park, NSW 2285

Area: 454 m2

Type: Residential Land



Cameron Grove Sales  
0436910290

**\$410,000**

Lot 258 is one of a kind, amazing views of the Estate, ideal for split level or two storey home. This lot has a 15 m frontage and now registered and ready to build! Start your building journey now! Cameron Grove Estate is a true hidden gem; a vibrant, family-friendly community located within easy reach of shops, delicious dining options, cafés, parks and playgrounds. The Estate maintains the perfect balance of being quiet while providing connectivity to major arterial roads leading in all directions. Designed with a focus on convenience and connection, Cameron Grove Estate's exceptional land and homes are a rare opportunity to secure a dream property, in an up and coming area. We are open Saturday and Sunday, reach out on 0436 910 290 to book your tour on site! 28 Breakwell Road, Cameron Park