

Lot 292 Parktree Avenue, Yanchep, WA 6035

House For Sale

Tuesday, 14 May 2024

LOCALE
HOMES

Lot 292 Parktree Avenue, Yanchep, WA 6035

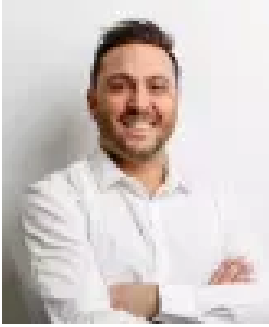
Bedrooms: 6

Bathrooms: 3

Parkings: 6

Area: 389 m2

Type: House



Ivano Rizzacasa

0403354223

6 BED DUAL KEY DUPLEX PAIR | \$784,990

Discover an exceptional investment opportunity with our cutting-edge Dual Key Home design, purpose-built with investors in mind. This stunning property offers an array of enticing features that will elevate your investment strategy to new heights:

- 1. Double the Income Potential:** With a total of 5 bedrooms, our Dual Key Home is designed to maximize your rental income. This smart layout comprises two fully self-contained homes, ensuring you can enjoy double the rental returns. Each of the 5 bedrooms is thoughtfully designed to provide comfort and ample living space for your tenants.
- 2. Convenience at Its Best:** Featuring not one, but two fully equipped kitchens and laundry's, this design ensures convenience for both sets of tenants. Tenants will appreciate the added benefit of a double shower, adding a touch of luxury to their living space.
- 3. Privacy for Tenants:** The separated garage and carport between the two homes provide an additional layer of privacy, allowing each set of tenants to enjoy their own independent access and space. This design enhances the appeal of the property, making it more attractive to prospective tenants.
- 4. Outdoor Entertaining Bliss:** Step into the generous alfresco area, the perfect spot for outdoor relaxation and entertainment. This outdoor space adds an element of luxury and comfort to your rental properties, making them even more appealing to potential tenants.
- 5. Investor-Centric Approach:** Our Dual Key Home has been meticulously crafted with the investor in mind. We understand that your primary focus is on returns, and this investment opportunity is geared towards delivering just that.
- 6. Hassle-Free Investment:** The package includes a rent-ready, turnkey solution. We've taken care of all the details to ensure you can start collecting maximum rental returns with ease. No need to worry about the specifics – simply choose your preferred color palate, and you're ready to embark on a journey to financial success. Invest with confidence and secure your financial future with this Dual Key Home. Contact us today to explore how this investment opportunity can be tailored to your specific needs. It's time to enjoy the benefits of double rental income and a hassle-free investment journey. Your prosperous investment venture starts here!

Yanchep Discover Investment Bliss in Yanchep
Yanchep welcomes you to a thriving community, where your investment dreams find fulfillment through our tailored Dual Key Home and Land Packages. Here's why Yanchep is your gateway to a sound investment and an enriched lifestyle:

- Metronet's Northern Anchor Point:** Positioned as Metronet's northern anchor point, Yanchep's northern rail extension is nearing completion by mid-2023. Yanchep Station's construction enhances accessibility, providing a convenient transport option and boosting investment potential.
- Education Excellence:** Yanchep boasts top-notch schools, ensuring family-friendly living with specialized programs and a rich array of extracurricular activities. Your children can thrive academically and socially, creating lasting memories while securing your financial future.
- Local Shopping and Retail Hub:** Yanchep Central Shopping Centre serves as the local shopping hub with Woolworths, specialty stores, and upcoming Aldi store, offering convenience and variety. Daily essentials and delightful experiences are within reach, making life in Yanchep a breeze.
- Retail Extravaganza at Lakeside Joondalup:** For larger retail indulgences, Lakeside Joondalup beckons with over 300 specialty stores, cinema, food courts, and outdoor dining options. Big-name brands like Target, Myer, JB HiFi, and H&M ensure a retail haven within easy reach.

Investment Summary: Yanchep's capital gain of 7.29% in the past year and 45.07% over five years showcases steady growth. Median home price at \$515,000 with an average rent of \$550 indicates a potential 5.55% increase in gross rental yield. Property investors gained 3% in Yanchep based on increased median home prices in the last three months. A 2.73% growth over a ten-year period, ranking 3285th in a national survey, underlines Yanchep's potential for property investors. Embark on a journey of investment success and an enhanced lifestyle in Yanchep. Contact us now to explore the opportunities that await you in this thriving coastal community. Your financial future is within reach, set against the backdrop of Yanchep's vibrant and growing community.

Data taken from SPI magazine please seek independent financial advice

Disclaimer: The land advertised in this package is not owned by Locale Homes and must be purchased from the owner. The land may no longer be available at the time of your enquiry. The house design may need to vary to comply with design guidelines, DAPs, estate covenants or any other land developer requirements. Any costs for these changes will be paid for by the purchaser. Images and floor plans that have been shown are for illustration purposes only. Photographs and floor plans may not be truly representative of final designs. Some fixtures, features and landscaping may not be supplied by the builder so please call the agent for full information. [?](#)