

# Lot 308, Stage 1a The Summit at Cranley, Cranley, Qld 4350



## Sold Residential Land

Sunday, 13 August 2023

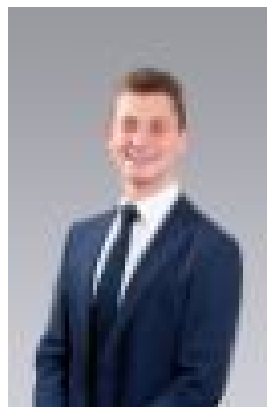
Lot 308, Stage 1a The Summit at Cranley, Cranley, Qld 4350

Area: 576 m2

Type: Residential Land



Brad Lipp



Corey Dunn  
0412811943

**\$240,000**

The Summit at Cranley is the superior choice with exceptional views to the north. Offering soothing scenery with premium living. There's no going back once The Summit at Cranley catches your eye. With panoramic views from every block, this estate is highly sort-after. The pure foundation of the estate ensures a sustainable outcome, will be surrounded with the spectacular beauty of natural parklands. The 50 Ha Cranley park is positioned in walking distance for family recreation offering nature walks, bike rides and picnics. Catering for your needs and wants, you'll love every minute of this astonishing estate. Get the most out of life once you set foot in The Summit at Cranley by being located only 6KM to Toowoomba's CBD, a 3 minute Drive to Wilsonton State Highschool and a 4 minute Drive to Fairview State school. This diverse estate accommodates for all! Starting out new or looking to upsize? The Summit at Cranley has multiple options for you to consider. Experience all the benefits for yourself and contact us today! \*\*A price and availability list is available upon request\*\*Accelerating Success. Contact Brad Lipp "The Land Man" of Colliers Toowoomba for more information.