

# Lot 315 Eveleigh Crescent, Bohle Plains, Qld 4817



## House For Sale

Thursday, 16 May 2024

Lot 315 Eveleigh Crescent, Bohle Plains, Qld 4817

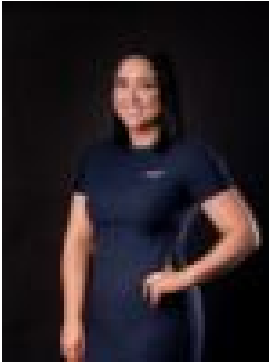
Bedrooms: 4

Bathrooms: 2

Parkings: 2

Area: 413 m2

Type: House



Alex Bourne Harris Crossing

0455428932

**\$599,000**

Brand new turnkey home, complete and ready to move into by end of 2024 at Harris Crossing! Situated in the heart of this beautiful community only walking distance to parklands, the Dune Design by M Homes Townsville represents the ideal opportunity for those looking to move into a brand-new home without going through the building process. Located on a 413m<sup>2</sup> block, this modern family home is low maintenance living at its best. With four bedrooms, open plan living, mud room, master bedroom with walk-in-robe and ensuite and walk in pantry, enjoy new home living without missing out on all those wanted extras. A community that is only minutes away from the thriving Willows Shopping Centre & Cannon Park Precinct, Harris Crossing gives you access to all day-to-day services you need. About the home • 4 bedrooms, 2 bath, 2 car • Master suite with ensuite bathroom • Mud room • Walk in Pantry • Daikin air-conditioning throughout • Ceiling fans throughout • Westinghouse appliances • High quality laminate kitchen benchtop • Separate laundry room • Double automatic garage with internal access • Fully landscaped & irrigated • Block size: 413sqm • House size: 183sqm About the location - 3 Minutes to Willows Shopping Centre - 3 Minutes to Reading Cinemas and the Cannon Park Entertainment Precinct - 4 Minutes from the Riverway Lagoons and Arts Centre - 4-6 Minutes from quality childcare, primary and high schools - With the Ring Road close by, you're well connected to Lavarack Barracks, Townsville Hospital and JCU, all within a few minutes drive - Home to North Queensland's first Disc Golf Course!!!