

# Lot 33 Zucanna Avenue, Ormeau, Qld 4208

## Sold House

Tuesday, 19 March 2024

Lot 33 Zucanna Avenue, Ormeau, Qld 4208

Bedrooms: 4

Bathrooms: 2

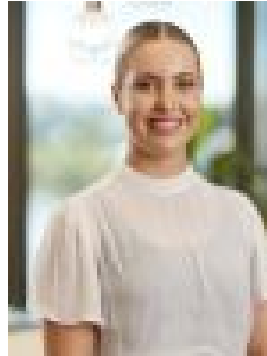
Parkings: 2

Area: 356 m2

Type: House



Olga Levitt



Tayla DeutscherMoore  
0497615900

**\$789,000**

A complete brand new, ready built solution offered under a fixed-price, single contract with everything completed - all you need is a key! Complete with all the bells and whistles to make modern living an absolute breeze:- Ducted Air-conditioning- Fans in all living areas- Blinds & Fly Screens- Professional landscaping- Driveway- Solar Panels- Premium appliances- Stone benchtops- Walk-in Pantry- Designer tap wear- Built in wardrobes- 2570mm ceilings Prepare to be wonderfully surprised by the ROME 20. Behind the subtle frontage of the Rome 20 Traditional awaits a home that's brimming with features that will make modern living an absolute breeze. A conveniently positioned study sets the scene. Then there's the brilliantly designed laundry offering loads of valuable storage space. The central dining room and living area are flooded with natural light thanks to the private courtyard-style patio with large sliding doors to extend your living areas outdoors seamlessly. The gourmet kitchen is complemented by a full-size pantry and even more cupboard space. A multipurpose room adds an extra dimension of privacy while the three secondary bedrooms share a resort-inspired bathroom. Finally, your retreat includes its own handsome bedroom, walk-in robe and private ensuite. This is a home that must be seen to be believed. And the best reasons to live at Amara in Ormeau? - Conveniently located on a scenic plateau, halfway between the thriving cities of Brisbane and Gold Coast.- Easy access to Ormeau train station and the M1.- A short drive to Gold Coast beaches.- Only 10-minutes to the waterfront.- Close to excellent schools, shopping, services, dining, sports and entertainment facilities.- An abundance of parklands, play areas, gardens, leafy walking trails and recreation areas including links to the nearby river. Contact our friendly Sales Team and find out how you can secure this exquisite designer home today! Visit our Award Winning Display at Amara. The Amara Sales & Information Centre is open 10am to 5pm daily. PLEASE NOTE: Internal images are an example only and internal colours and design may differ.